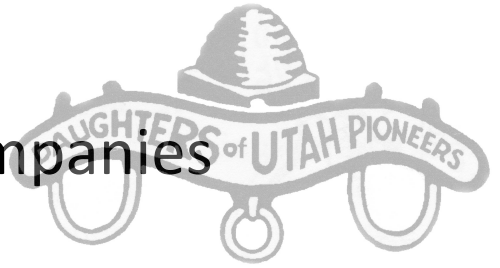


Handcart Captains and Companies

November 2025



For DUP Lesson Leaders

This photo array is reserved solely for use by a DUP Lesson Leader to supplement the appropriate lesson. No other uses are authorized and no images or content may be shared or distributed for any other purpose.

Please feel free to use the images in any way you wish to enhance your lesson, including printed copies of the images to show your group as well as use in any digital presentations, as long as you adhere to the above restrictions.

Please advise members of your group that they can order digital copies of any of the images provided here by contacting the DUP Photo Department. The funds generated by the DUP Photo Department help sustain our organization.

Tel: 801-532-6479, Ext 206

Email: photos@isdup.org

Website: www.isdup.org

Thank you for all you do.



Martin Handcart Company - Bitter Creek, Wyoming, 1856, by Clark Kelly Price

Ensign Oct. 1980

Handcart pioneer burial. (DUP Photo Collection)



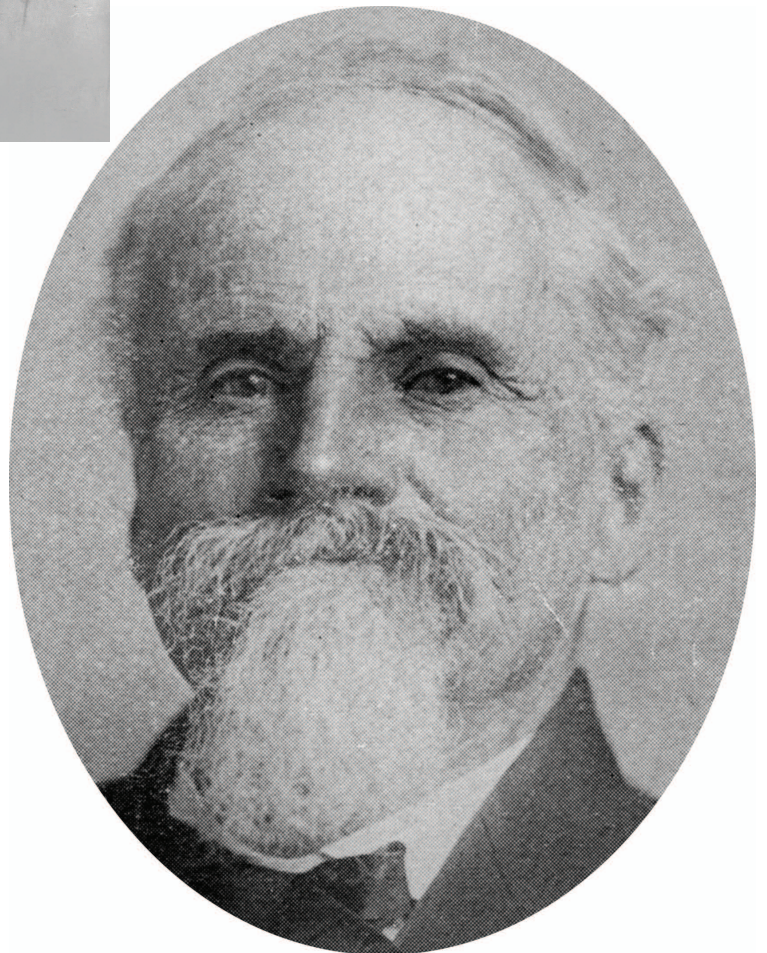
Abandoned handcart. (DUP Photo Collection)



Handcart company on the trail. (DUP Photo Collection)



James A. Little. (DUP Photo Collection)



Israel Evans.
(DUP Photo Collection)



Benjamin Ashby. (DUP Photo Collection)



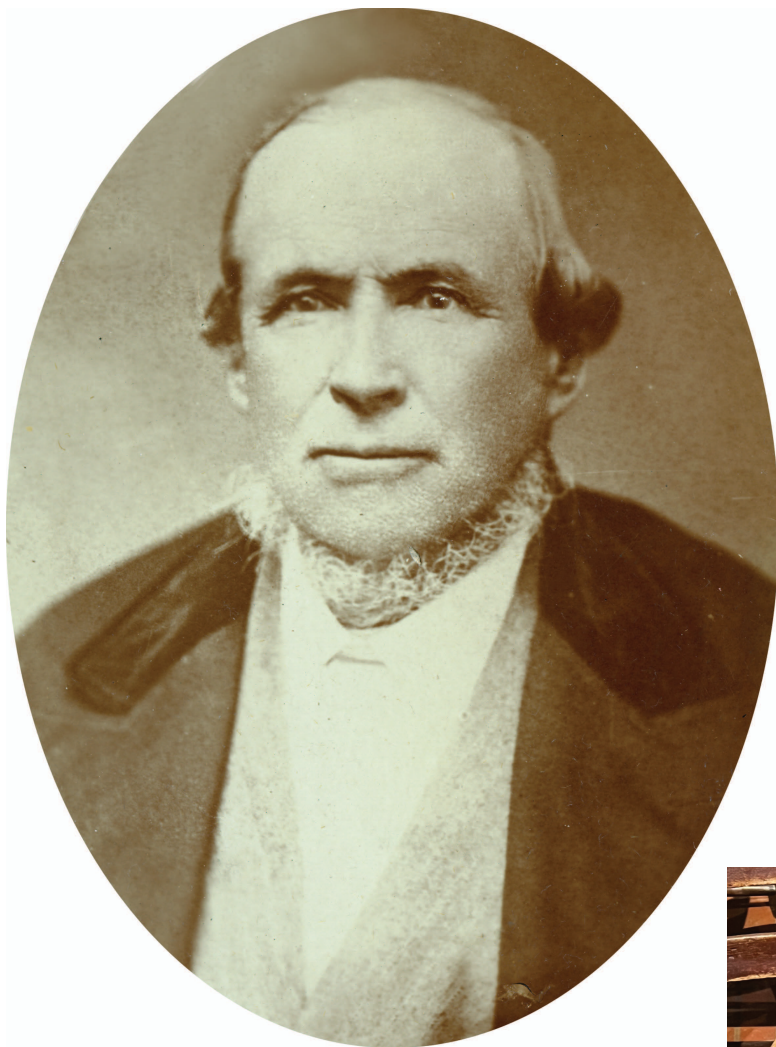
Sarah Cross Evans.
(DUP Photo Collection)



Thomas E. Ricks. (DUP Photo Collection)



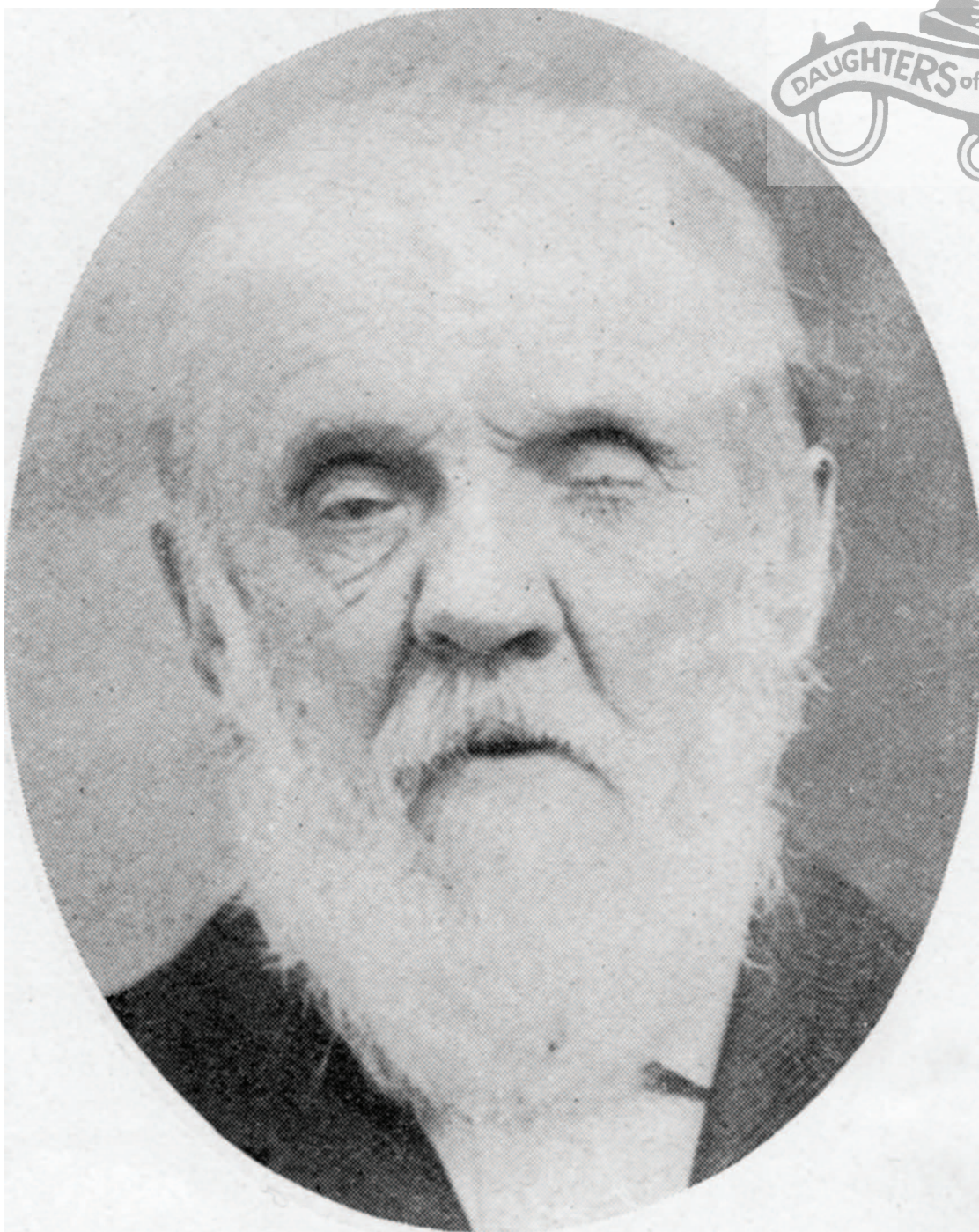
Barbara Ann Ewell Evans.
(DUP Photo Collection)



David Evans.
(DUP Photo Collection)

Chair used by David Evans in the
Territorial Legislature. (Museum
Carriage House, Second Floor)

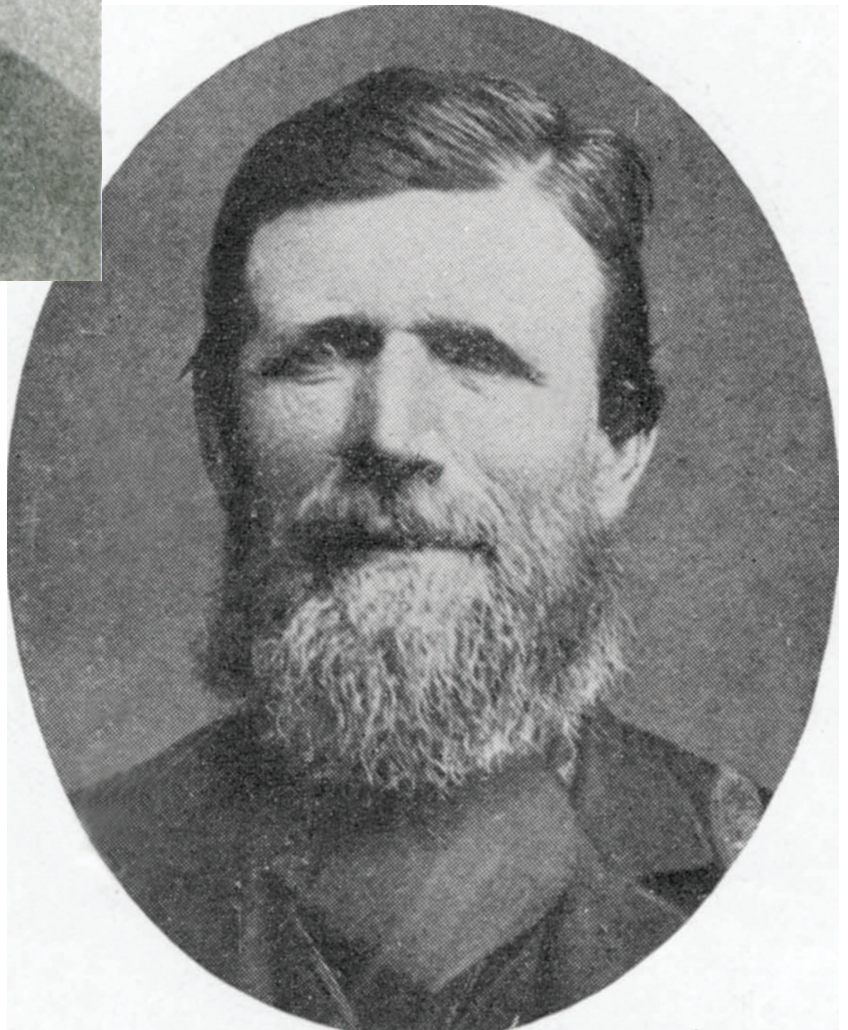




George Rowley. (DUP Photo Collection)



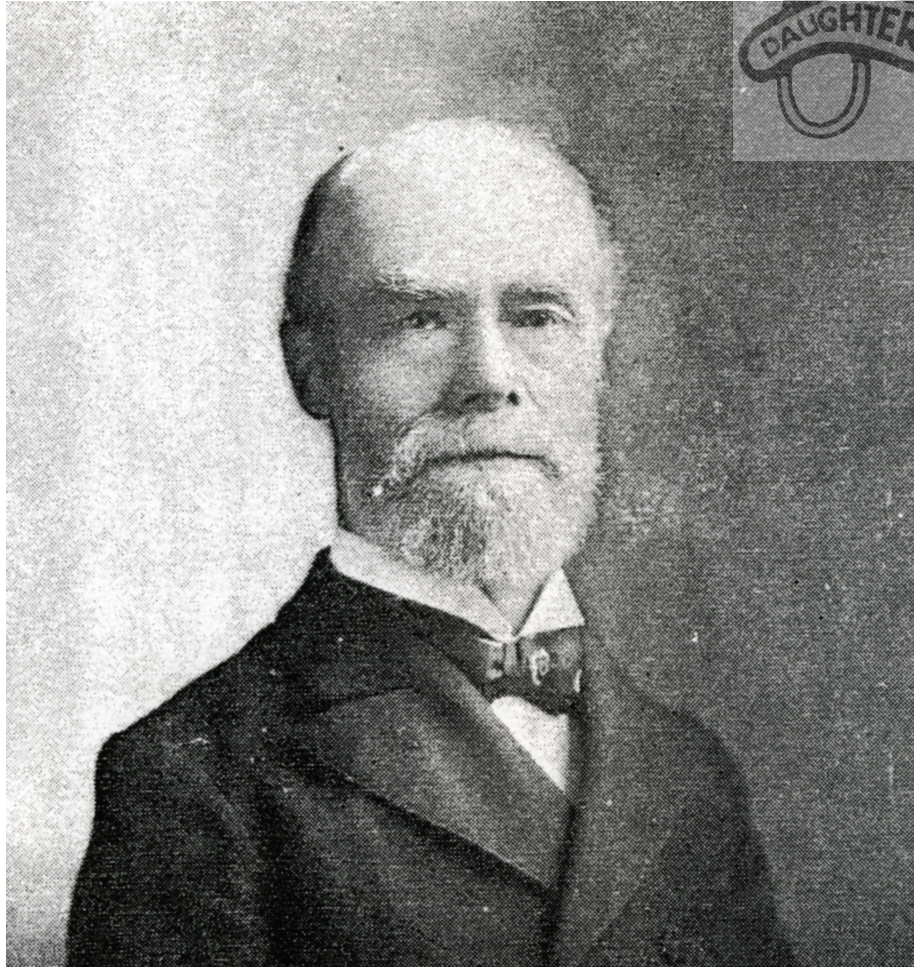
Helena Jonsson Erickson
Roseberry. (DUP Photo Collection)



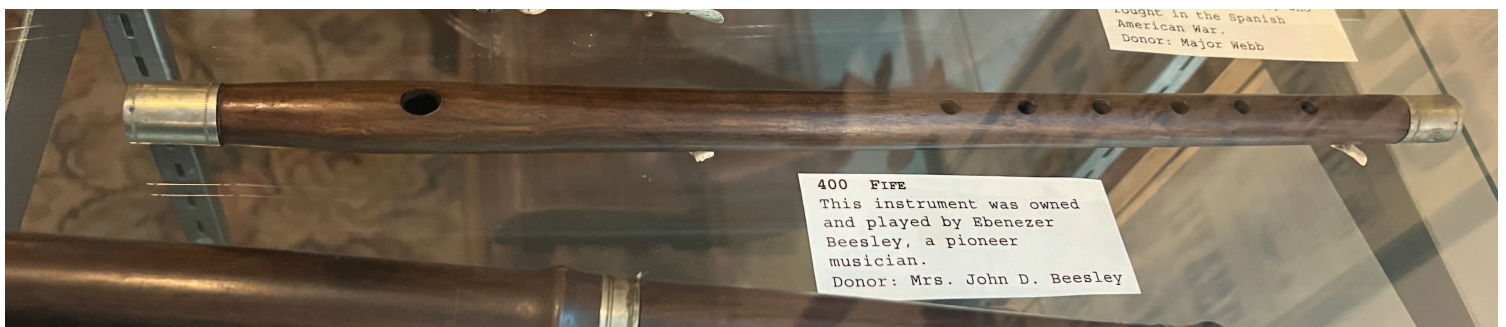
William Atkin. (DUP Photo Collection)



Family of Ebenezer and Sarah Hancock Beesley. (DUP Photo Collection)



Ebenezer Beesley. (DUP Photo Collection)



Fife owned and played by Ebenezer Beesley. (Museum Main Floor, Case 1C31)

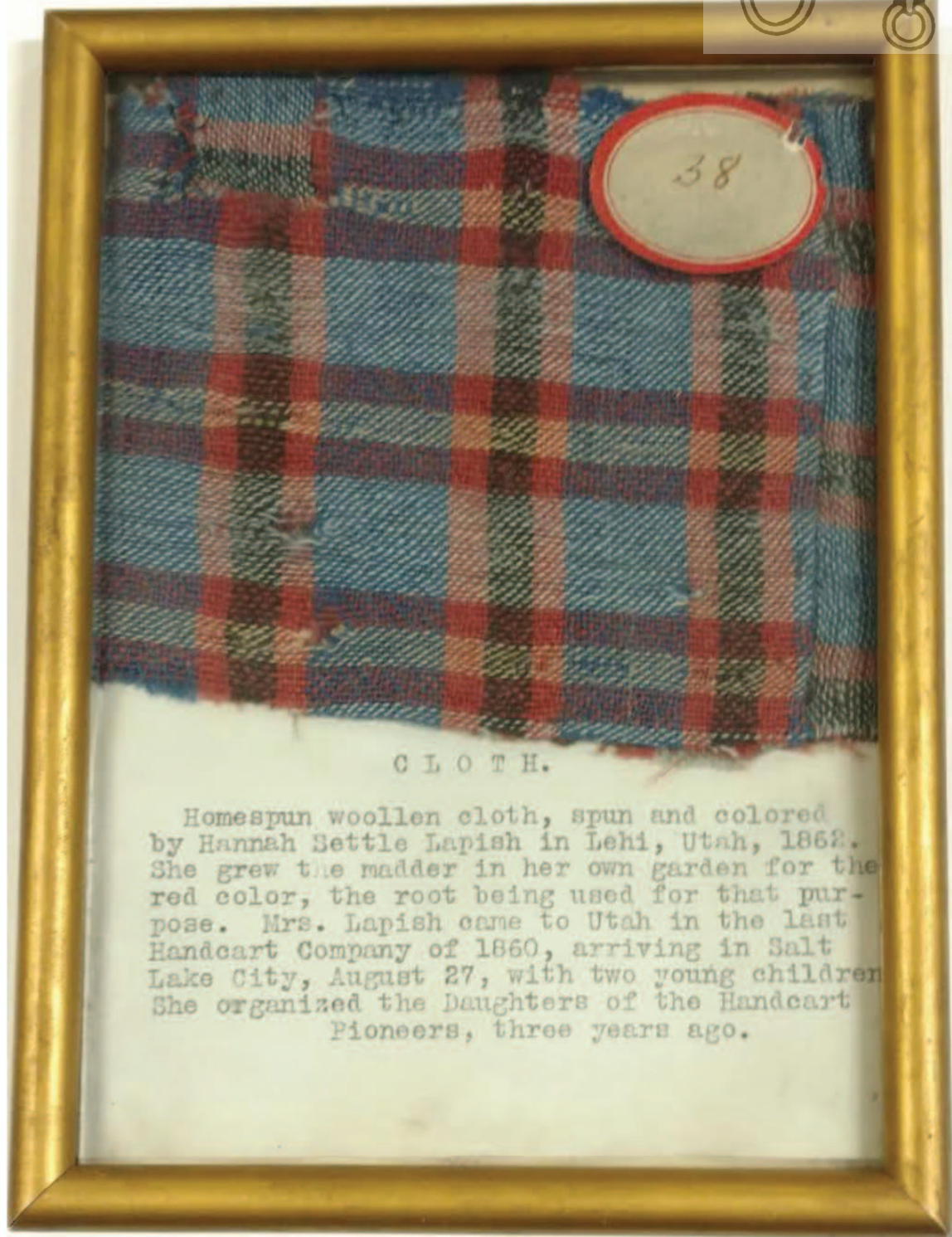


David Robison.
(DUP Photo Collection)



Hannah Lapisch.
(DUP Photo Collection)

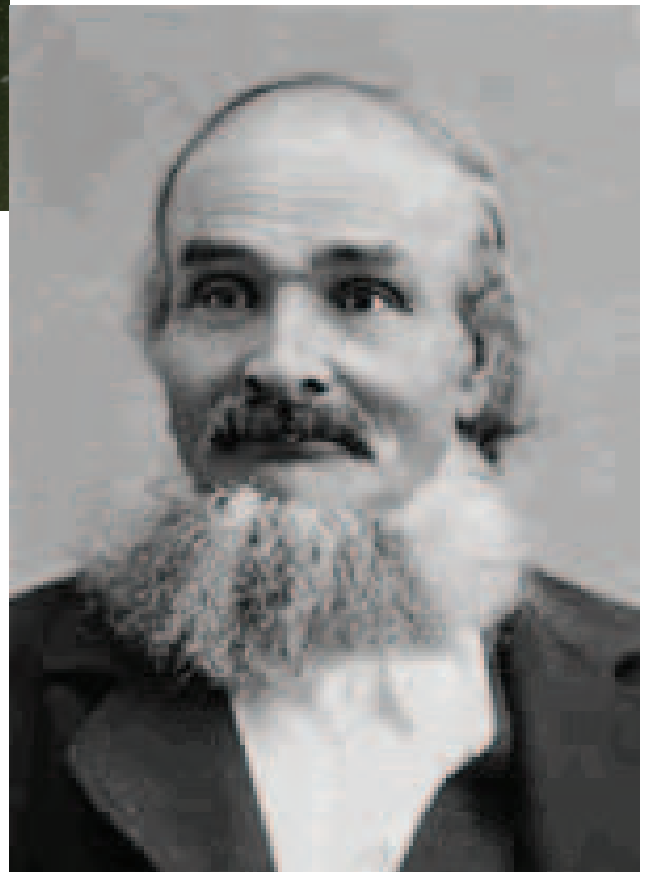
Hannah Lapisch



Wool fabric homespun by Hannah Lapish. (Museum Second Floor, Case 2C59)



Mary Ann Stucki Hafen.
(DUP Photo Collection)



Oscar Orlando Stoddard.
(www.findagrave.com)