



# Salmon River Mission

April 2026

For DUP Lesson Leaders

This photo array is reserved solely for use by a DUP Lesson Leader to supplement the appropriate lesson. No other uses are authorized and no images or content may be shared or distributed for any other purpose.

Please feel free to use the images in any way you wish to enhance your lesson, including printed copies of the images to show your group as well as use in any digital presentations, as long as you adhere to the above restrictions.

Please advise members of your group that they can order digital copies of any of the images provided here by contacting the DUP Photo Department. The funds generated by the DUP Photo Department help sustain our organization.

Tel: 801-532-6479, Ext 206

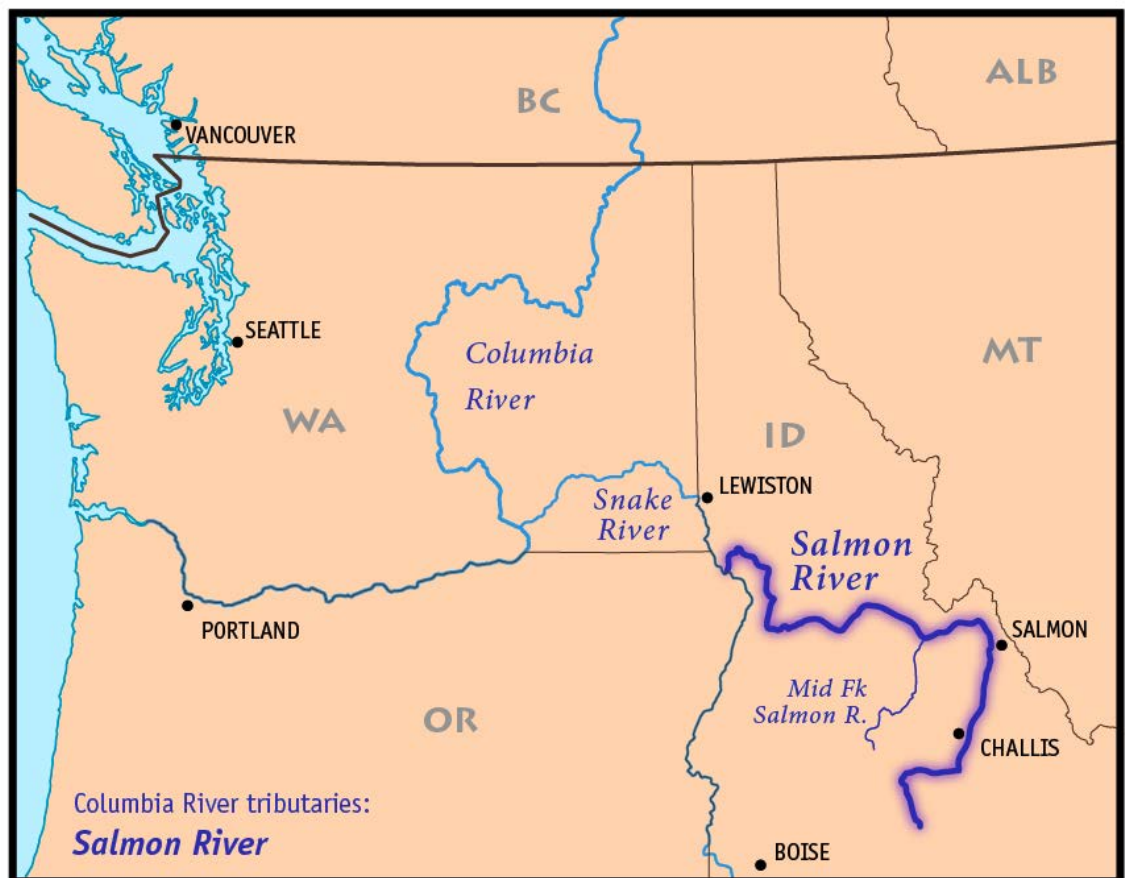
Email: [photos@isdup.org](mailto:photos@isdup.org)

Website: [www.isdup.org](http://www.isdup.org)

Thank you for all you do.



Salmon River in winter. (commons.wikimedia.org)



Salmon River, Idaho, map. (commons.wikimedia.org)



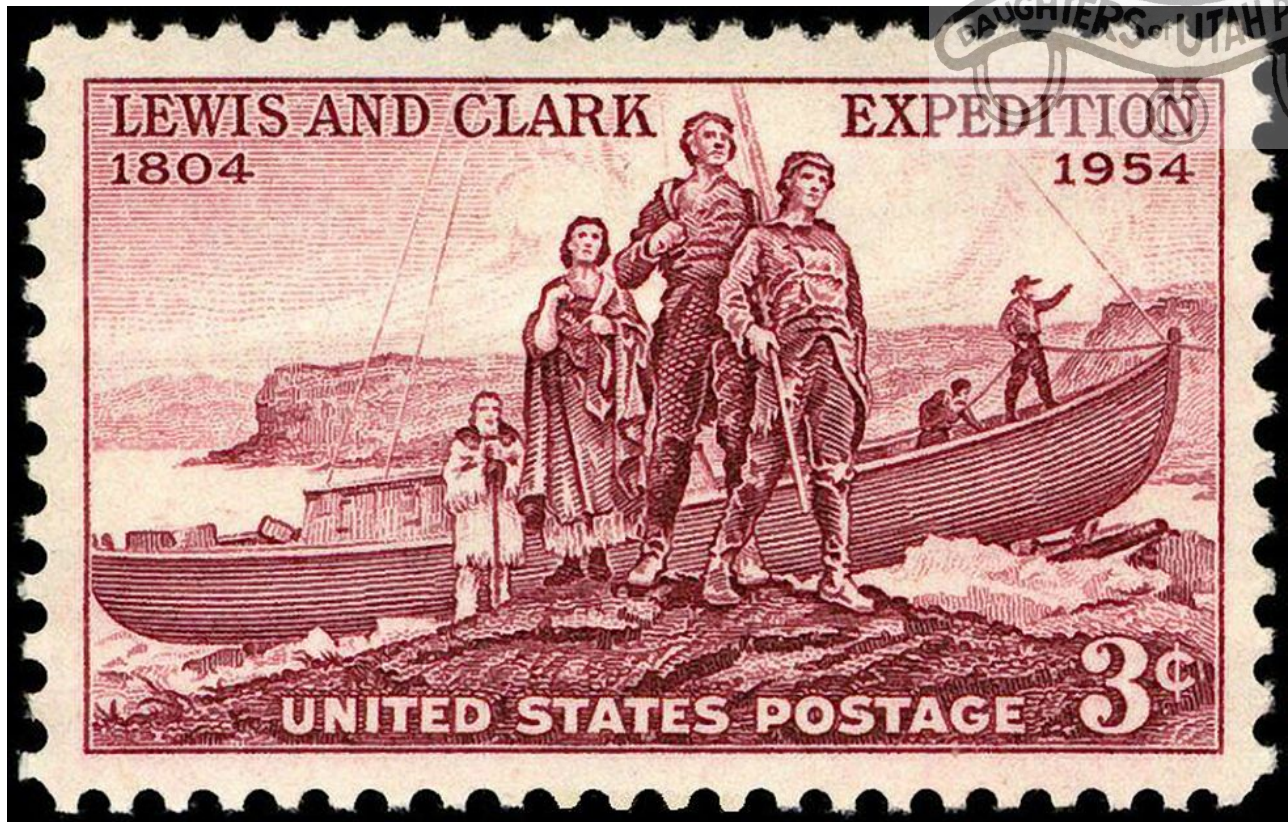


Shoshone Native Americans of Idaho. Timothy H. O'Sullivan photo. ([commons.wikimedia.org](https://commons.wikimedia.org/wiki/File:Shoshone_Native_Americans_of_Idaho.jpg))

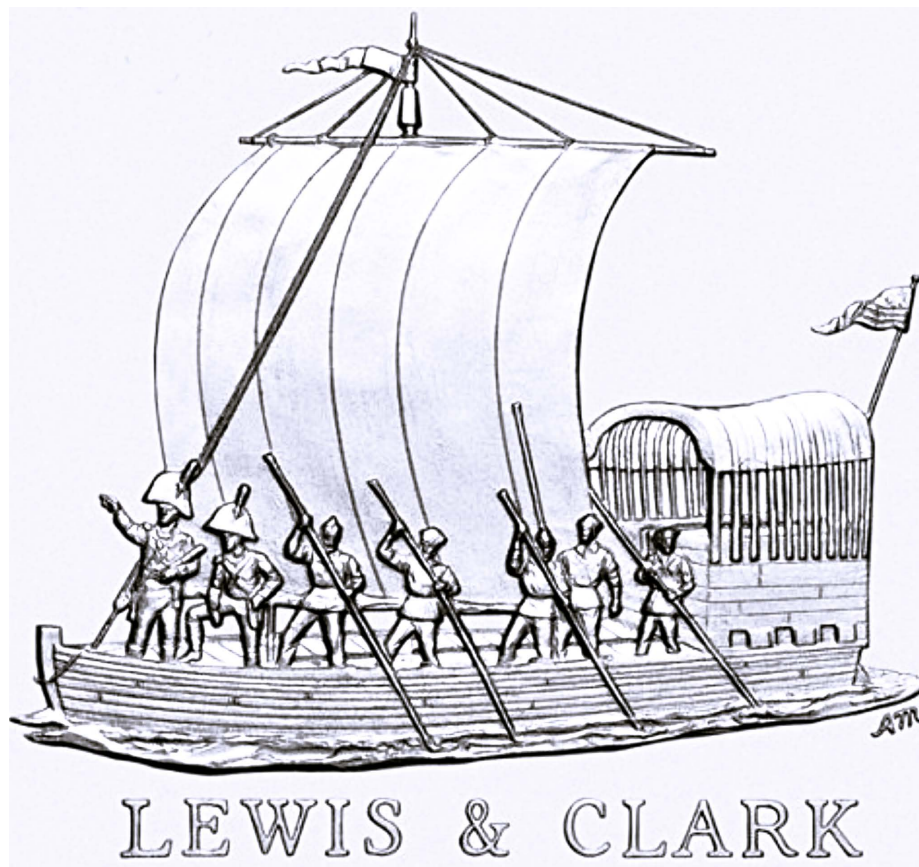


Bannock Native Americans of Idaho. Timothy H. O'Sullivan photo. ([commons.wikimedia.org](https://commons.wikimedia.org/wiki/File:Bannock_Native_Americans_of_Idaho.jpg))



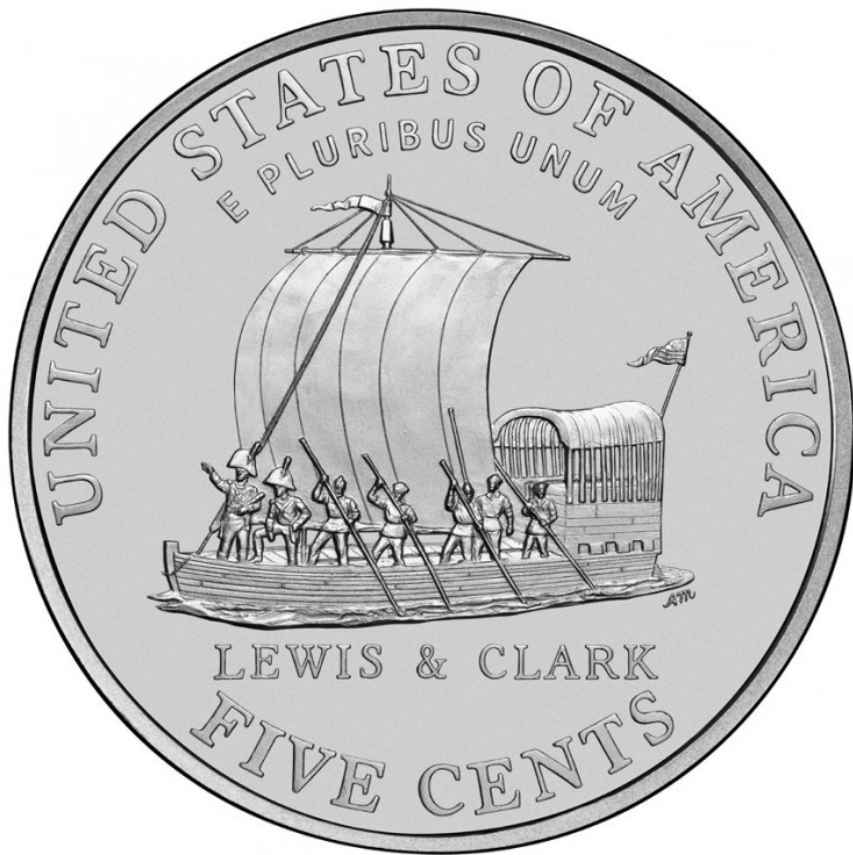


Lewis and Clark 1954 postage stamp. (commons.wikimedia.org)



Lewis and Clark keelboat. (wikipedia.org)





Keelboat Coin, Lewis and Clark Expedition. (wikipedia.org)



Sacagawea dollar coin, 2000. (wikipedia.org)





Sacagawea statue, Salmon, Idaho. ([commons.wikimedia.org](https://commons.wikimedia.org))

Lewis and Clark at Three  
Forks with Sacagawea.  
Portrait painted by Edgar  
Samuel Paxson.  
([wikipedia.org](https://wikipedia.org))







Salmon River and Sawtooth Mountains, 1940. (wikimedia.org)



Lemhi Pass, 1900. (commons.wikimedia.org)





Salmon River Expedition. ([commons.wikimedia.org](https://commons.wikimedia.org))

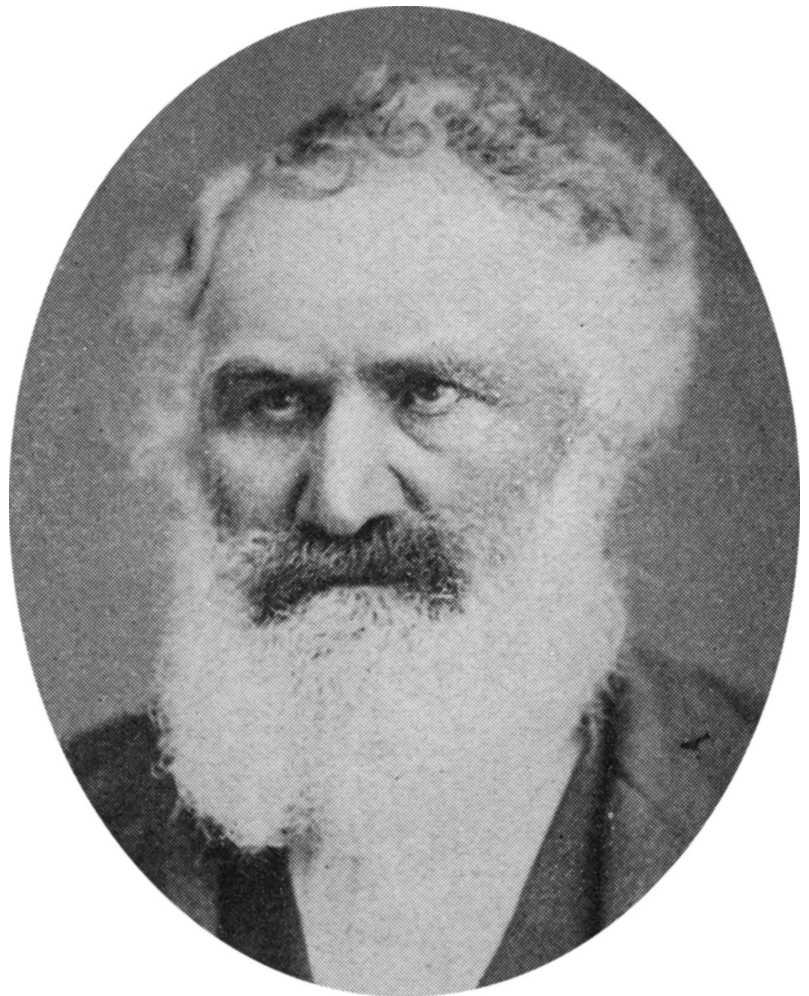


Mount Hood painted by William Keith prior to 1911. ([wikipedia.org](https://wikipedia.org))





Fort Clatsop facsimile, 1919. ([commons.wikimedia.org](https://commons.wikimedia.org))



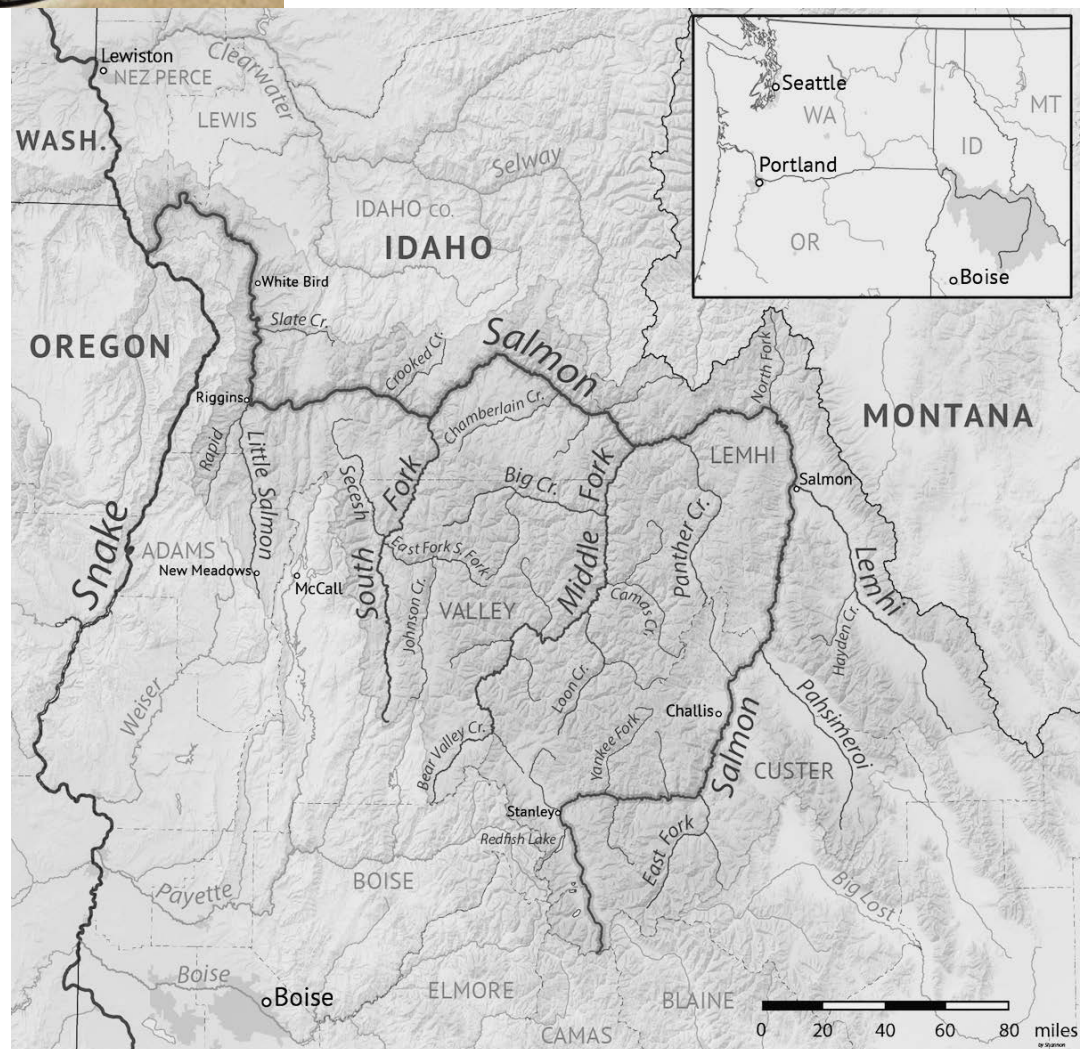
Thomas Sasson Smith.  
(DUP Photo Collection)



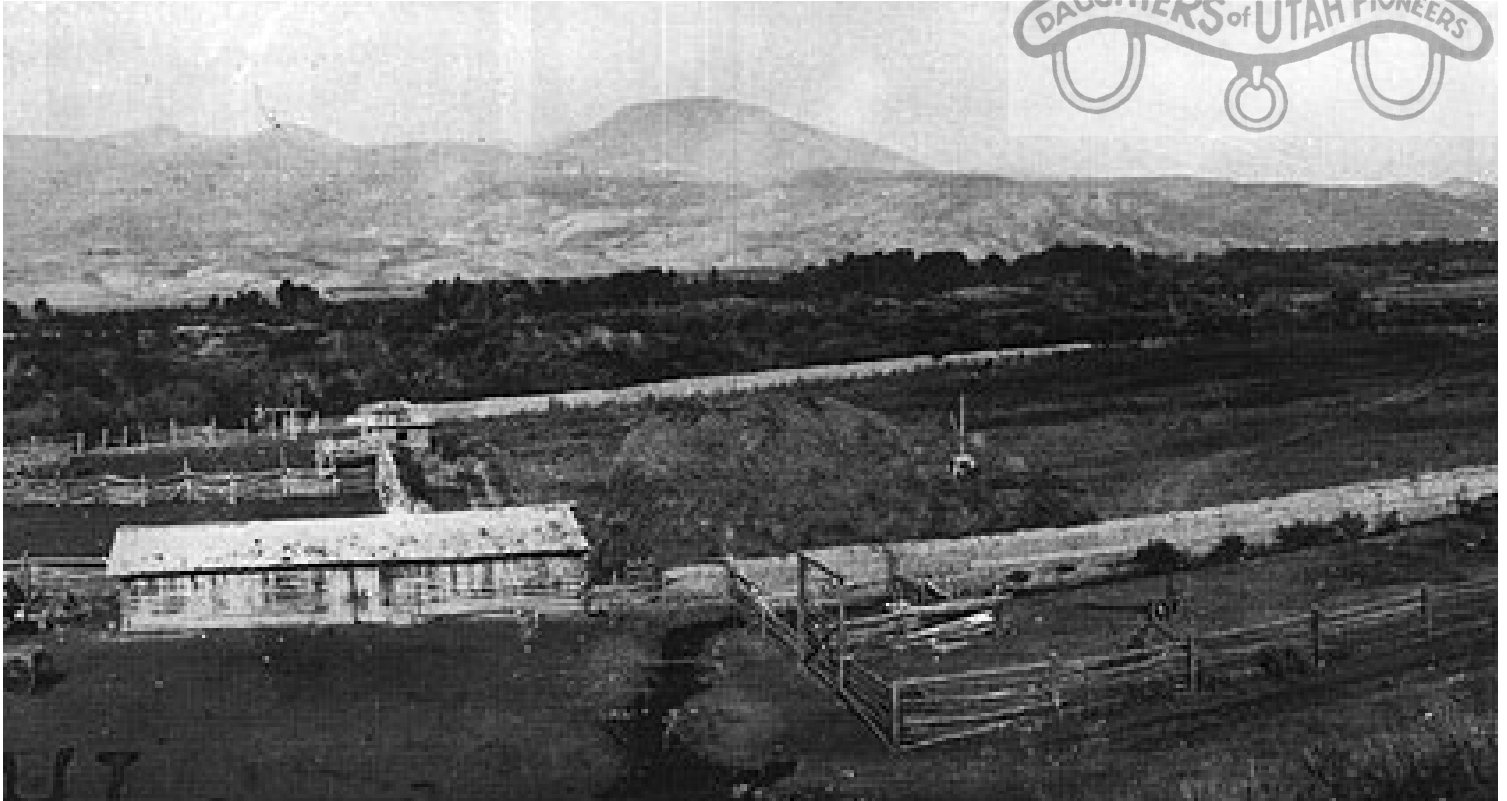


Francillo Durfee, courtesy of Tim Dowling.

Salmon River Basin Map.  
(commons.wikimedia.org)







Fort Limhi, circa 1900. (wikipedia.org)



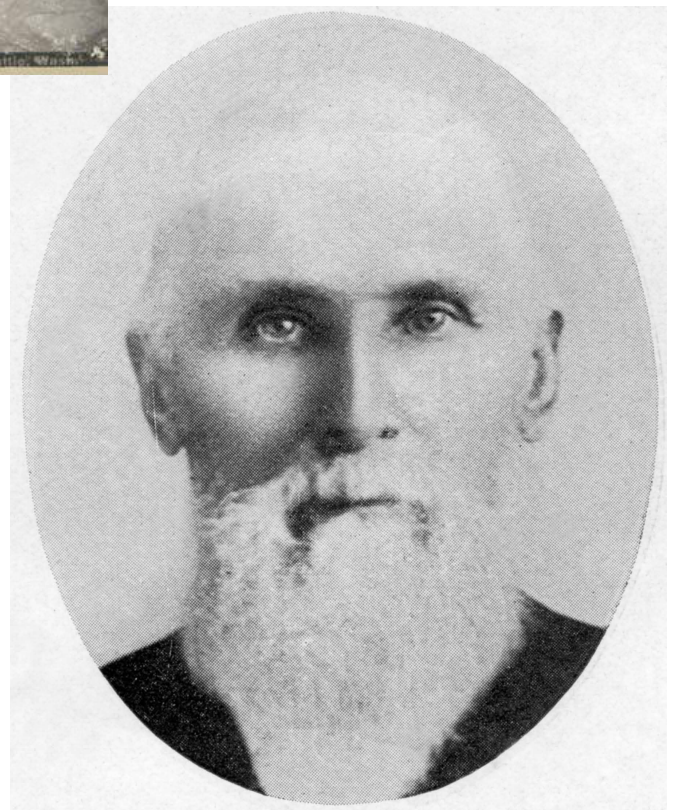
Shoshone Native Americans of Idaho. Andrew J. Russell photograph.  
(commons.wikimedia.org)



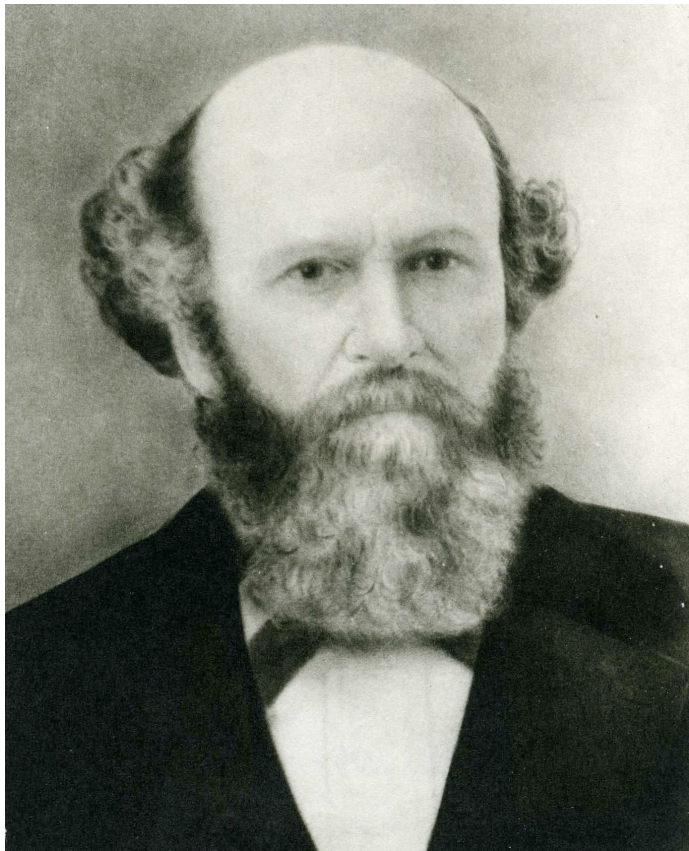


Nez Perce warrior, 1899. Frank La Roche photograph. ([commons.wikimedia.org](https://commons.wikimedia.org))

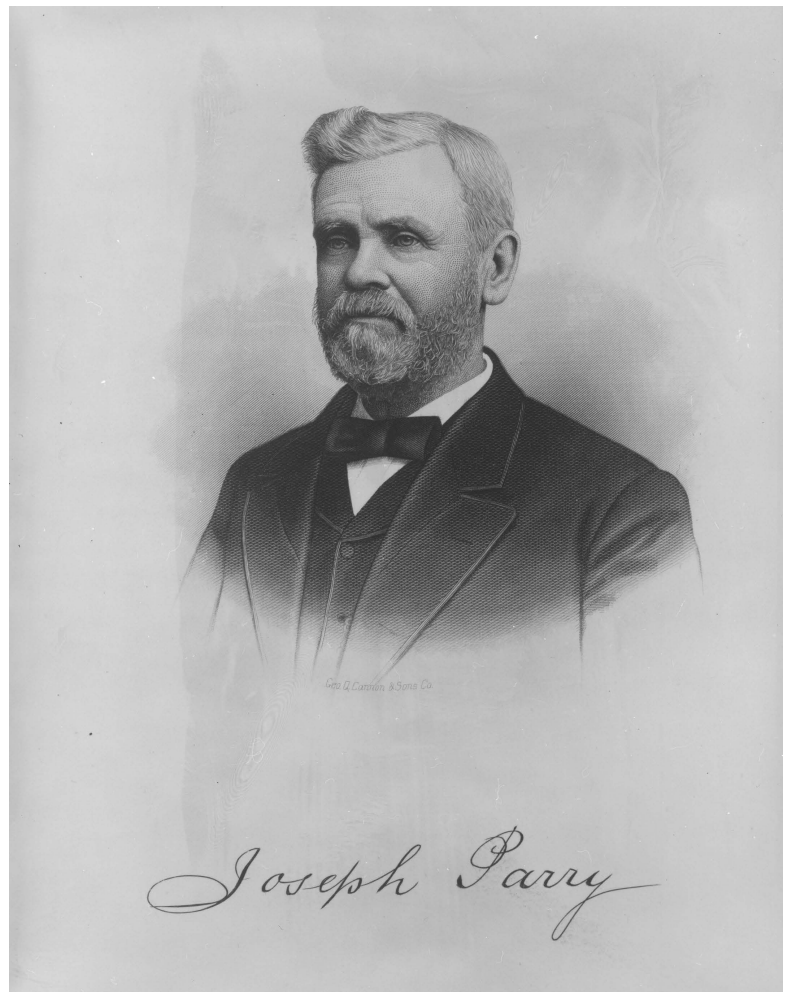
David Moore.  
(DUP Photo Collection)





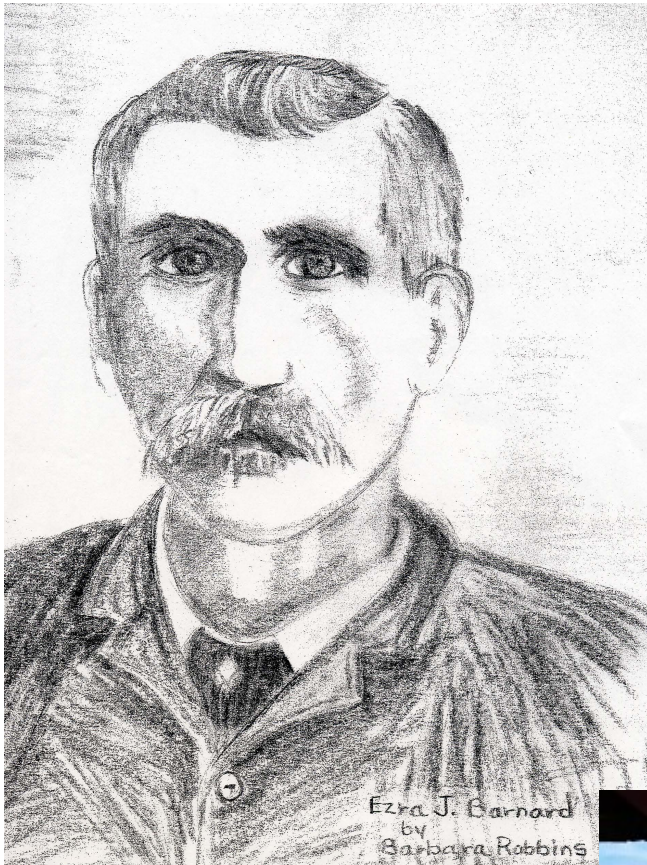


Gilbert Belnap.  
(DUP Photo Collection)

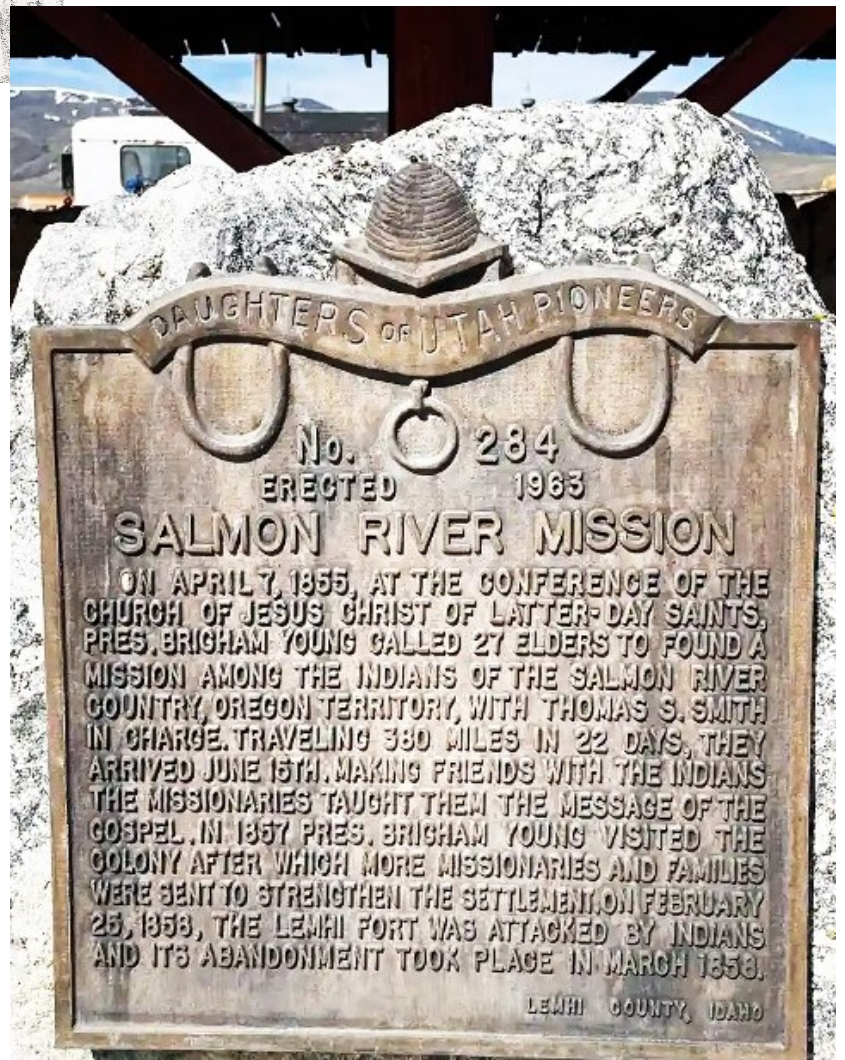


Joseph Parry.  
(DUP Photo Collection)





Ezra Jacob Wycoff Barnard. (DUP Photo Collection)

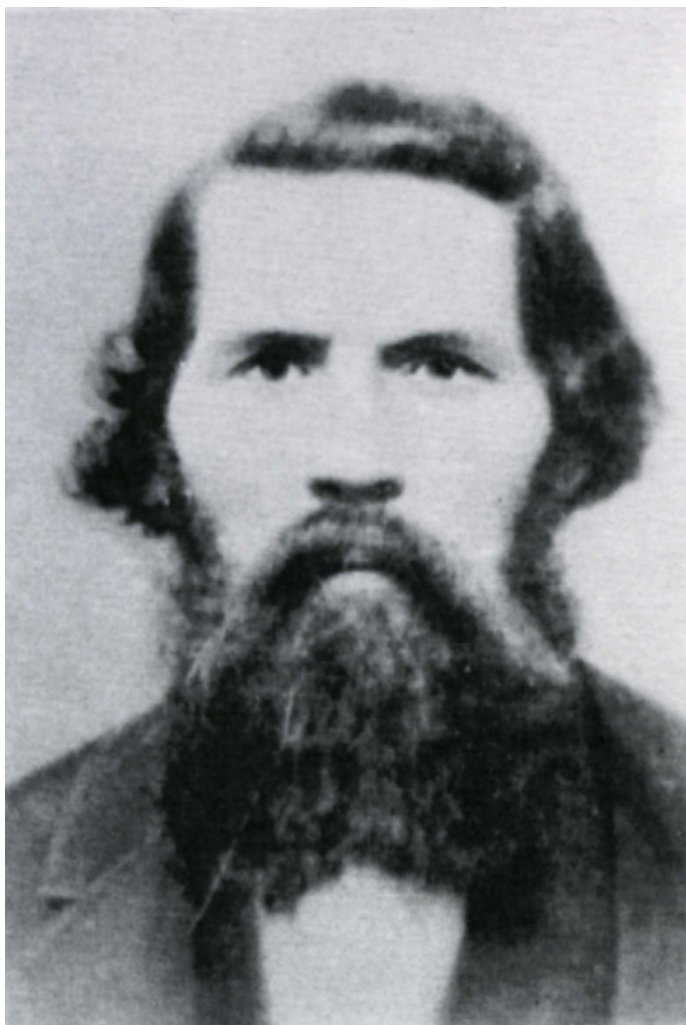


Salmon River Mission.  
DUP Marker #284.  
(Photograph by Jacob Barlow)





Susan Marler Harmon. (DUP Photo Collection)



Henry Martin Harmon.  
(DUP Photo Collection)





Emily Jane Pearson Clark. (DUP  
Photo Collection)

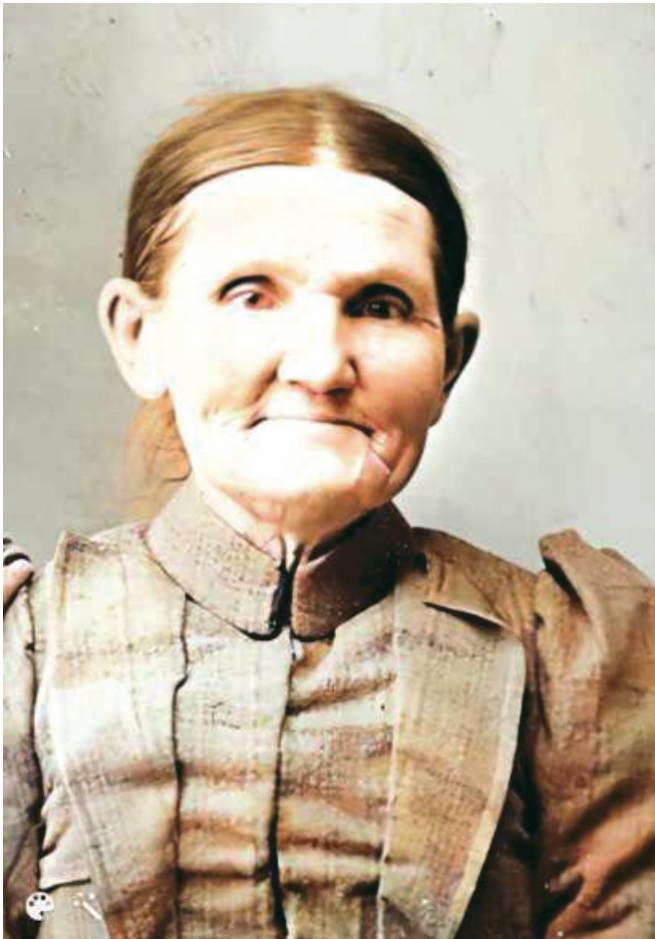


Israel Justus Clark.  
(DUP Photo Collection)





Ruth Ann Miller McBride. (DUP Photo Collection)



Sarah Jane Marler Lake.  
(DUP Photo Collection)





Mary Isabell (Polly) Clark Smith. (DUP Photo Collection)