



The Salt Lake City Cemetery

April 2027

For DUP Lesson Leaders This photo array is reserved solely for use by a DUP Lesson Leader to supplement the appropriate lesson. No other uses are authorized and no images or content may be shared or distributed for any other purpose. Please feel free to use the images in any way you wish to enhance your lesson, including printed copies of the images to show your group as well as use in any digital presentations, as long as you adhere to the above restrictions.

Please advise members of your group that they can order digital copies of any of the images provided here by contacting the DUP Photo Department. The funds generated by the DUP Photo Department help sustain our organization.

Tel: 801-532-6479, Ext 206

Email: photos@isdup.org

Website: www.isdup.org

Thank you for all you do.



Mary M. Wallace Marker (Plate C-6-8-4-W) (Maryann Jensen photo)



Official Salt Lake Cemetery death and burial records (Maryann Jensen photo)



Sexton's house (Maryann Jensen photo)



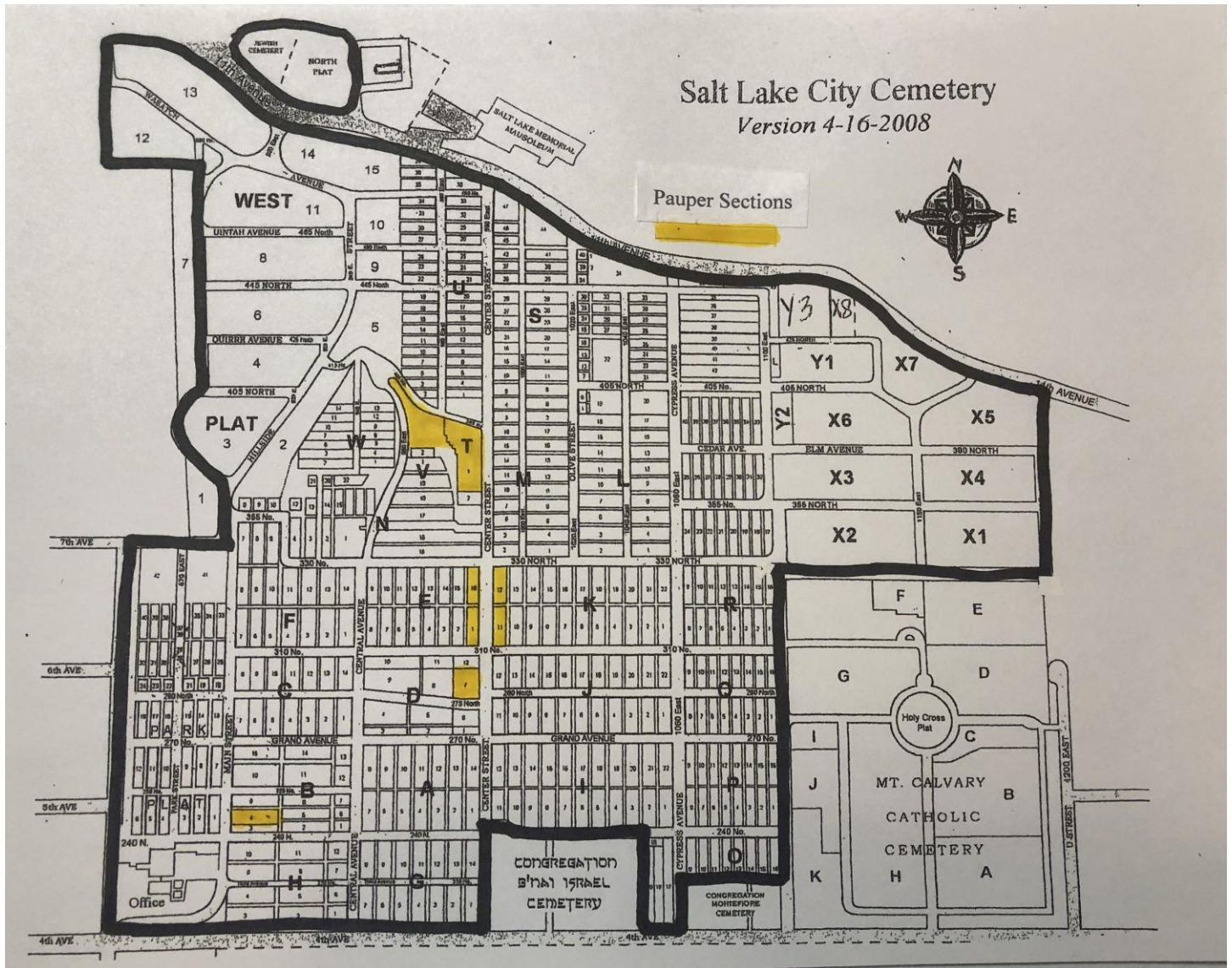
Cemetery entrance gates (Maryann Jensen photo)



Japanese area of the cemetery (Plat V-6-1-5-E) (Maryann Jensen photo)



Veteran graves for those serving from the Civil War to the present (Maryann Jensen photo)



Cemetery map available at the sexton's office (Maryann Jensen photo)



Gold Star Mothers Monument to honor mothers whose loved ones died while serving (Maryann Jensen photo)



Kimball-Whitney Cemetery entrance (Maryann Jensen photo)



Marker inside Kimball-Whitney Cemetery



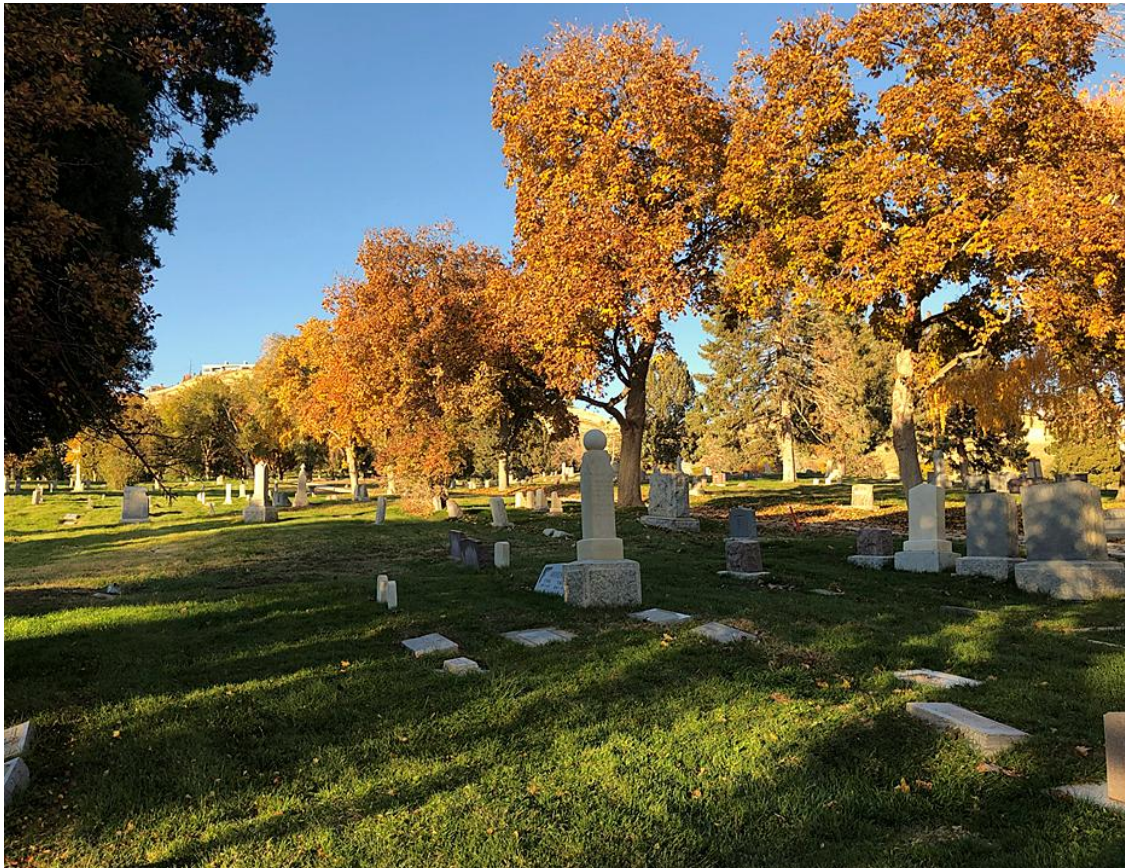
Brigham Young's grave (DUP Photo Collection)



Mount Olivet Cemetery entrance (Maryann Jensen photo)



View of cemetery as a park (Maryann Jensen photo)



Fall foliage in the cemetery (Maryann Jensen photo)



Giant Sequoia trees located between Central Avenue and Center Street at 270 North (Maryann Jensen photo)



Three deer in cemetery (Maryann Jensen photo)

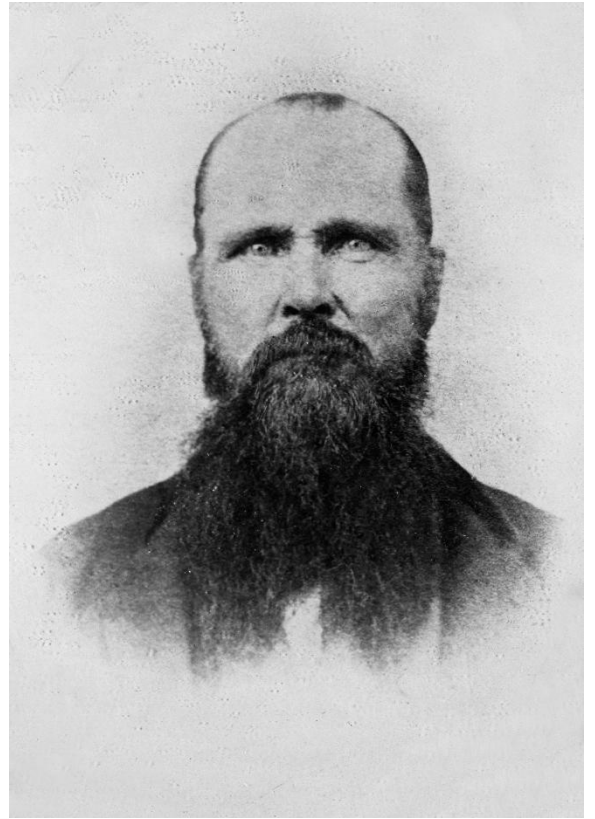


Brigham Morris Young dressed as Madam Pattirini
(DUP Photo Collection)

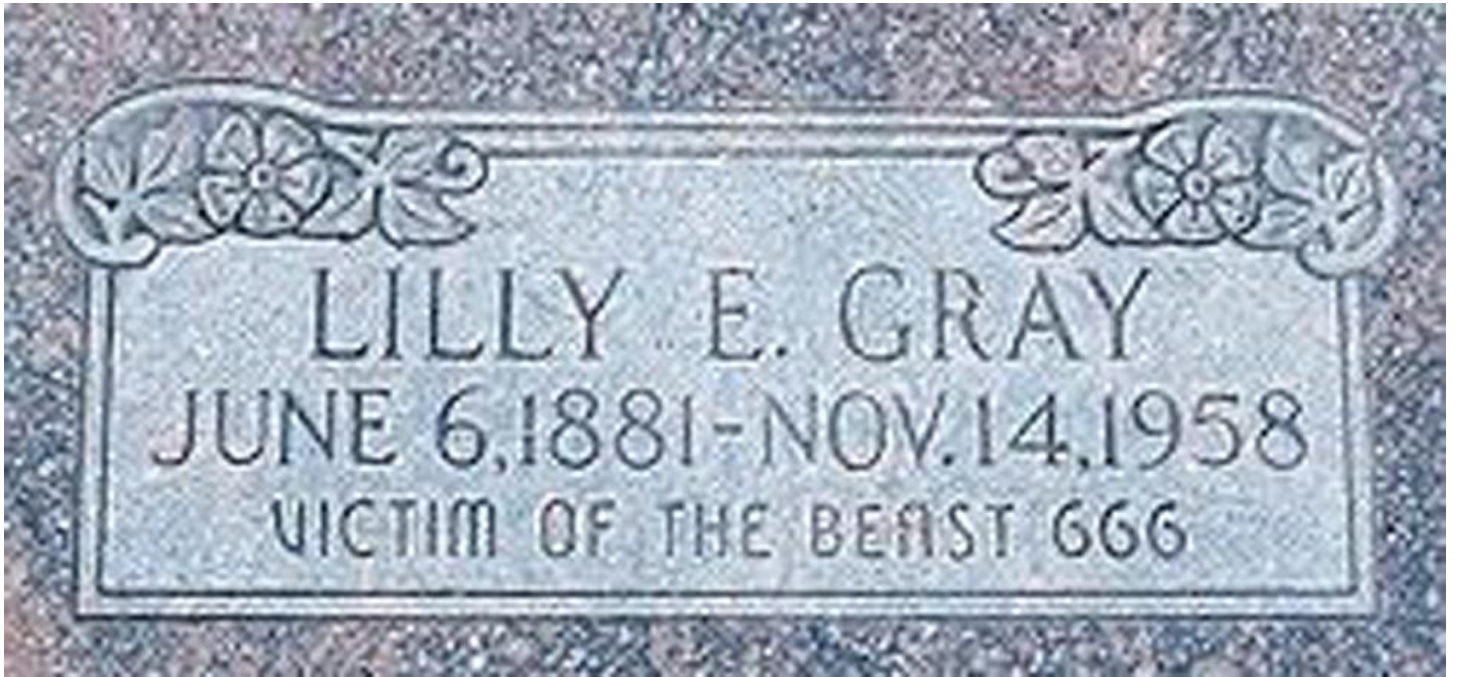


Brigham Morris Young headstone (Maryann Jensen photo)

Orrin Porter Rockwell
(DUP Photo Collection)



Orrin Porter Rockwell headstone (Maryann Jensen
photo)



Lilly Edith Gray marker (findagrave.com)



Joseph Alfred Slade (wikipedia.org)



Jack Slade meeting Mark Twain (wikipedia.org)



Joseph A. Slade marker (Maryann Jensen photo)



Jacob Moritz
(Utah State Historical Society)

Jacob Moritz monument (thedeathhistory.com)





Harriet Amelia Folsom Young (DUP Photo Collection)

Jane Elizabeth Manning James (wikipedia.org)



JANE ELIZABETH MANNING JAMES

"I TRY IN MY FEEBLE WAY TO SET A GOOD EXAMPLE FOR ALL."

BORN FREE IN 1882, FAIRFIELD COUNTY, CONNECTICUT

BAPTIZED LDS IN 1844 SHE LED A GROUP OF FAMILY MEMBERS TO
NAUVOO, ILLINOIS IN 1843

"OUR FEET CRACKED OPEN AND BLED UNTIL YOU COULD SEE THE WHOLE PRINTS
OF OUR FEET WITH BLOOD ON THE GROUND"

JANE LIVED WITH JOSEPH, EMMA AND MOTHER SMITH

"BROTHER JOSEPH SAT DOWN BY ME AND SAID, 'GOD BLESS YOU,
YOU ARE AMONG FRIENDS.'"

MARRIED ISAAC JAMES AROUND 1845

ARRIVED IN SALT LAKE SEPTEMBER 22, 1847

"OH HOW I SUFFERED OF COLD AND HUNGER, BUT THE LORD GAVE US FAITH
AND GRACE TO STAND IT ALL."

SHARED HALF HER FLOUR WITH ELIZA PARTRIDGE LYMAN,
WHO WAS NEAR STARVING.

DIED APRIL 16, 1908, OUTLIVING ALL BUT TWO OF HER EIGHT CHILDREN

"BUT WE WENT ON OUR WAY REJOICING, SINGING HYMNS, AND THANKING GOD
FOR HIS INFINITE GOODNESS AND MERCY TO US."



Romania Bunnell Pratt Penrose (wikipedia.org)



Romania Bunnell Pratt Penrose headstone (Maryann Jensen photo)



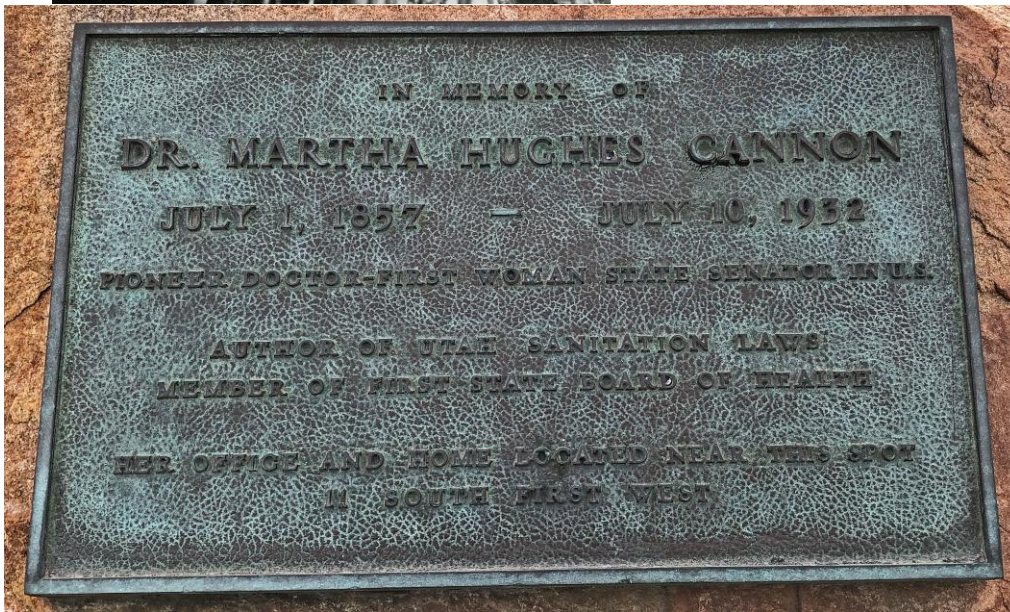
Sarah Melissa Granger Kimball (DUP Photo Collection)



Sarah Melissa Granger Kimball headstone (Maryann Jensen photo)



Martha Hughes Cannon (DUP Photo Collection)

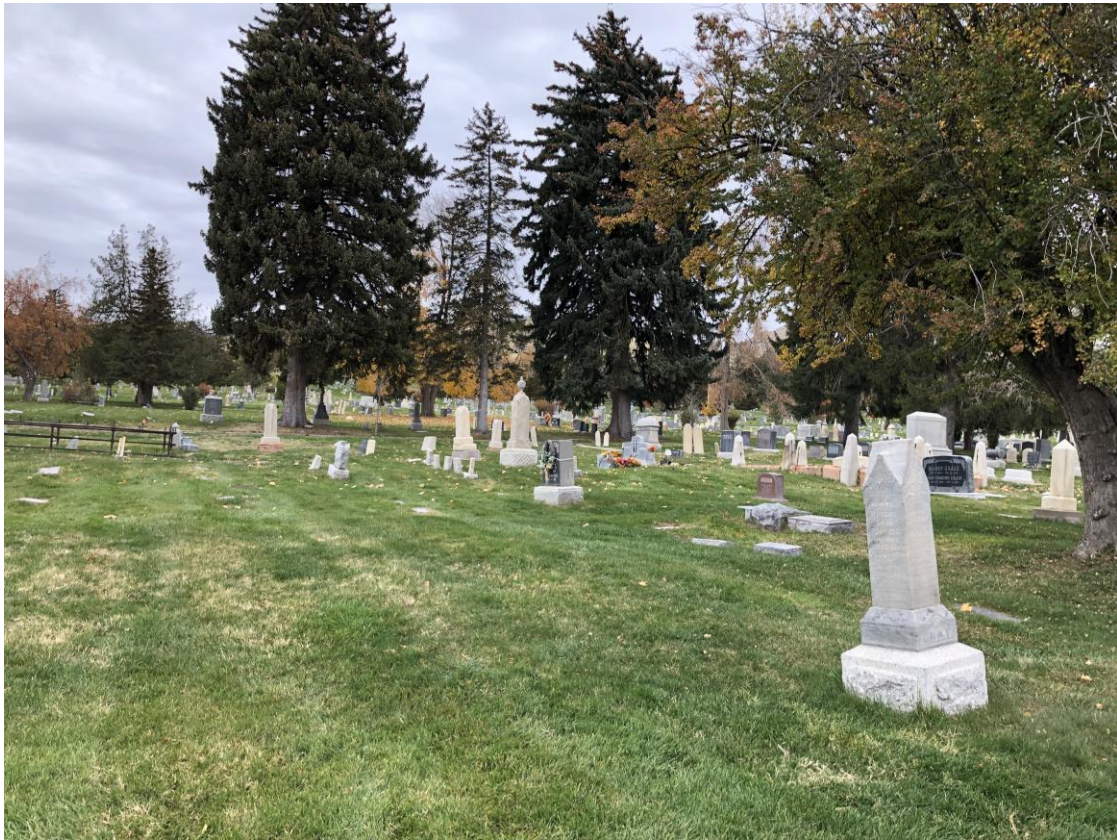


Martha Hughes Cannon marker





Pauper's area in the Salt Lake City Cemetery (Maryann Jensen photo)



Pauper's area on the left of the photo (Maryann Jensen photo)



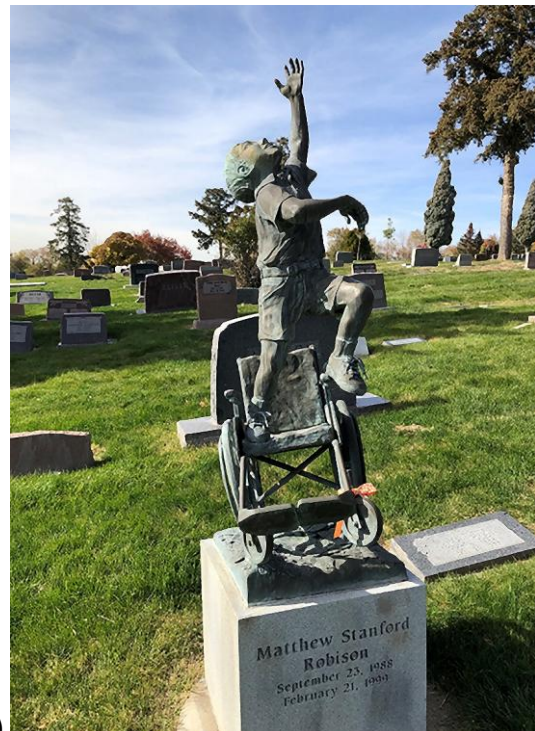
"Tom" marker (Maryann Jensen photo)



Annie Taylor Hyde maker (Plat N-5-1-2-E)



The Christmas Box Angel (Maryann Jensen photo)



Matthew Stanford Robison (Plat 6-130-1-W)



Edward R. Martin (Plat-F-2-8-3-E)



The Works Progress Administration plaque (Maryann Jensen photo)



View of Salt Lake City from the cemetery (Maryann Jensen photo)